

Eden Research Laboratory

To:

Date: 7/27/17

Update

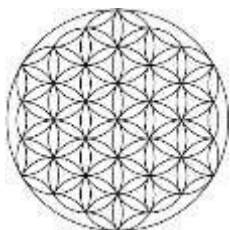
From: Thomas Poth

Number of pages including cover: 2

Regarding: Samples (498 days)

2111 Menaul NE, Suite A
 Albuquerque, NM 87107
 T 505.508.3994
 M 505.550.9316
 thomas.poth@edenresearchlab.
 com

	Inculum	Negative	Positive	1368 - PS coffee cup lids 1% additive	1369 - PP cups 1% additive	1370 - PET Sheet 1% additive
Cumulative Gas Volume (mL)	2662.2	3344.0	11233.6	9544.6	12583.2	11190.4
Percent CH ₄ (%)	35.3	39.1	39.7	47.8	49.9	52.9
Volume CH ₄ (mL)	940.1	1308.0	4460.7	4562.8	6273.6	5914.9
Mass CH ₄ (g)	0.67	0.93	3.19	3.26	4.48	4.22
Percent CO ₂ (%)	43.0	38.9	42.4	36.3	34.6	36.8
Volume CO ₂ (mL)	1144.5	1302.3	4759.5	3462.7	4354.6	4115.7
Mass CO ₂ (g)	2.25	2.56	9.35	6.80	8.55	8.08
Sample Mass (g)	10	10	10	20.0	20.0	20
Theoretical Sample Mass (g)	0.0	8.6	4.2	18.5	16.7	17.1
Biodegrade d Mass (g)	1.12	1.40	4.94	4.30	5.69	5.37
Percent Biodegrade d (%)		3.3	90.6	17.2	27.3	24.8
* Adjusted Percent Biodegrade d (%)		3.6	100.0	19.0	30.2	27.4

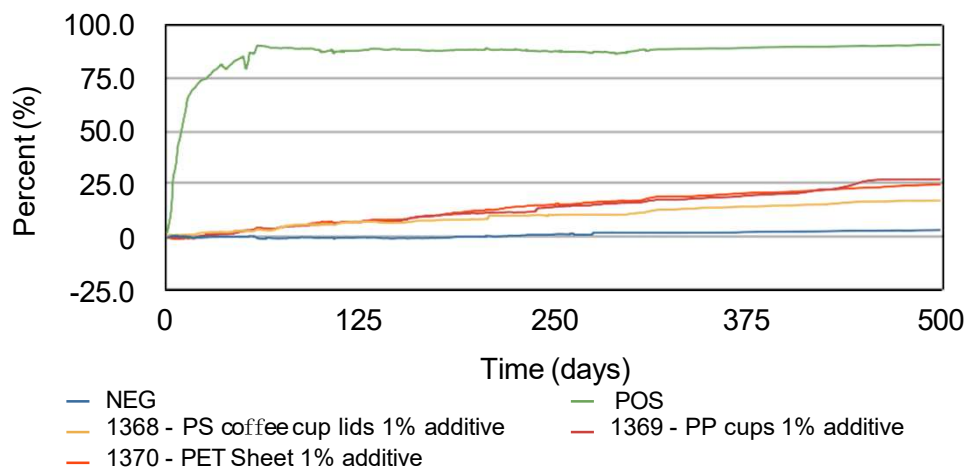


Eden Research Laboratory

Update

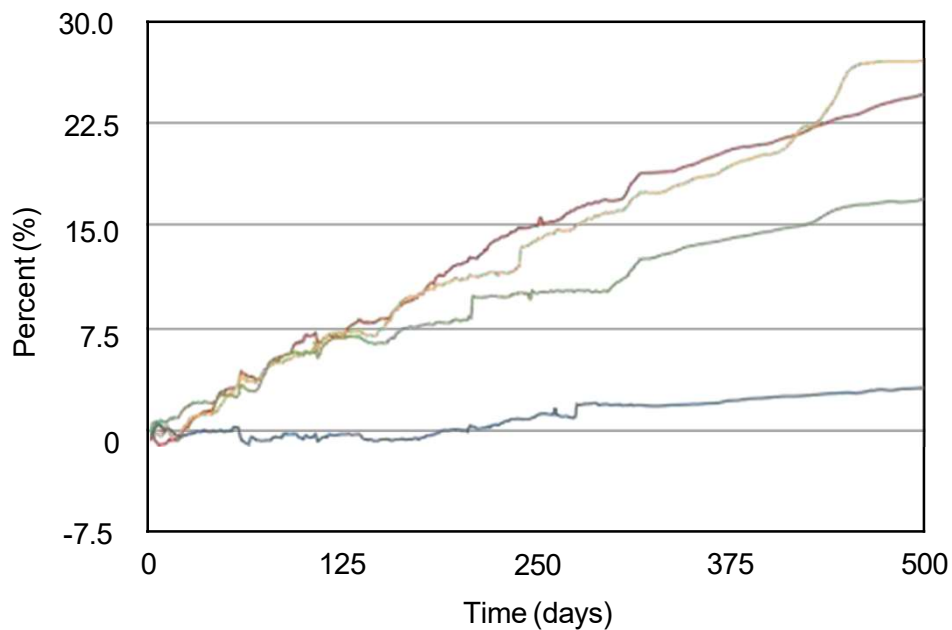
2111 Menaul NE, Suite A
Albuquerque, NM 87107
T 505.508.3994
M 505.550.9316
thomas.poth@edenresearchlab.
com

Biodegradation



— NEG — 1368 - PS coffee cup lids 1% additive
— 1369 - PP cups 1% additive — 1370 - PET Sheet 1% additive

Biodegradation



* Outside of the ASTM D5511 method and on the assumption that the positive control (Cellulose) will fully biodegrade, all value have been proportionally adjusted.